



GUAM POWER AUTHORITY

ATURIDÁT ILEKTRESEDÁT GUÅHAN
P.O.BOX 2977 • HAGÁTÑA, GUAM U.S.A. 96932-2977

FOR IMMEDIATE RELEASE

December 12, 2025

**FOR MORE INFORMATION
CONTACT: JOYCE SAYAMA
COMMUNICATIONS MANAGER
PHONE NO.: 671 648-3145**

ADVISORY TO THE PUBLIC

Full and Partial Road Closure Needed to Support System Improvements

(Fadian, Mangilao) – The Guam Power Authority (GPA) is providing an update to the previously announced partial road closure in Dededo scheduled for **Saturday, December 13, 2025**, from **12:00 a.m. to 4:00 p.m.**

As part of ongoing overhead work near the GPA Harmon Substation, a **full lane closure** will also be in effect on **Saturday, December 13, 2025, from 1:00 a.m. to 5:00 a.m.** along **Route 1 (Marine Corps Drive)**. The closure will extend from the Route 1/Route 16 intersection to the Route 1/Route 3 intersection. During this time, motorists traveling on Route 1 will be detoured through Route 16 for passage via Fatima Street.

After **5:00 a.m.**, the **innermost southbound lane and two innermost northbound lanes will reopen** to allow traffic to flow through the area. The **two outermost southbound lanes and the outermost northbound lane will remain closed until 4:00 p.m.**, or sooner if work is completed earlier than scheduled.

GPA crews will be continuing to reconfigure transmission lines along Route 1, Marine Corps Drive, Dededo, near the GPA Harmon Substation across the Micronesia Mall. The removal of transmission lines was completed during the partial road closure on Thursday, December 11, 2025.

Flagger and highway road signs will be present to direct motorists as work is being performed in this area. Motorists should expect traffic delays as work is being performed in this area. Road closures are necessary in order to ensure the safety of the line crew and other personnel.

We apologize for any inconvenience this may cause. GPA thanks the community for its patience and understanding as crews work to safely complete these improvements.

To get the most up-to-date information, please visit our website at www.guampowerauthority.com or social media pages.

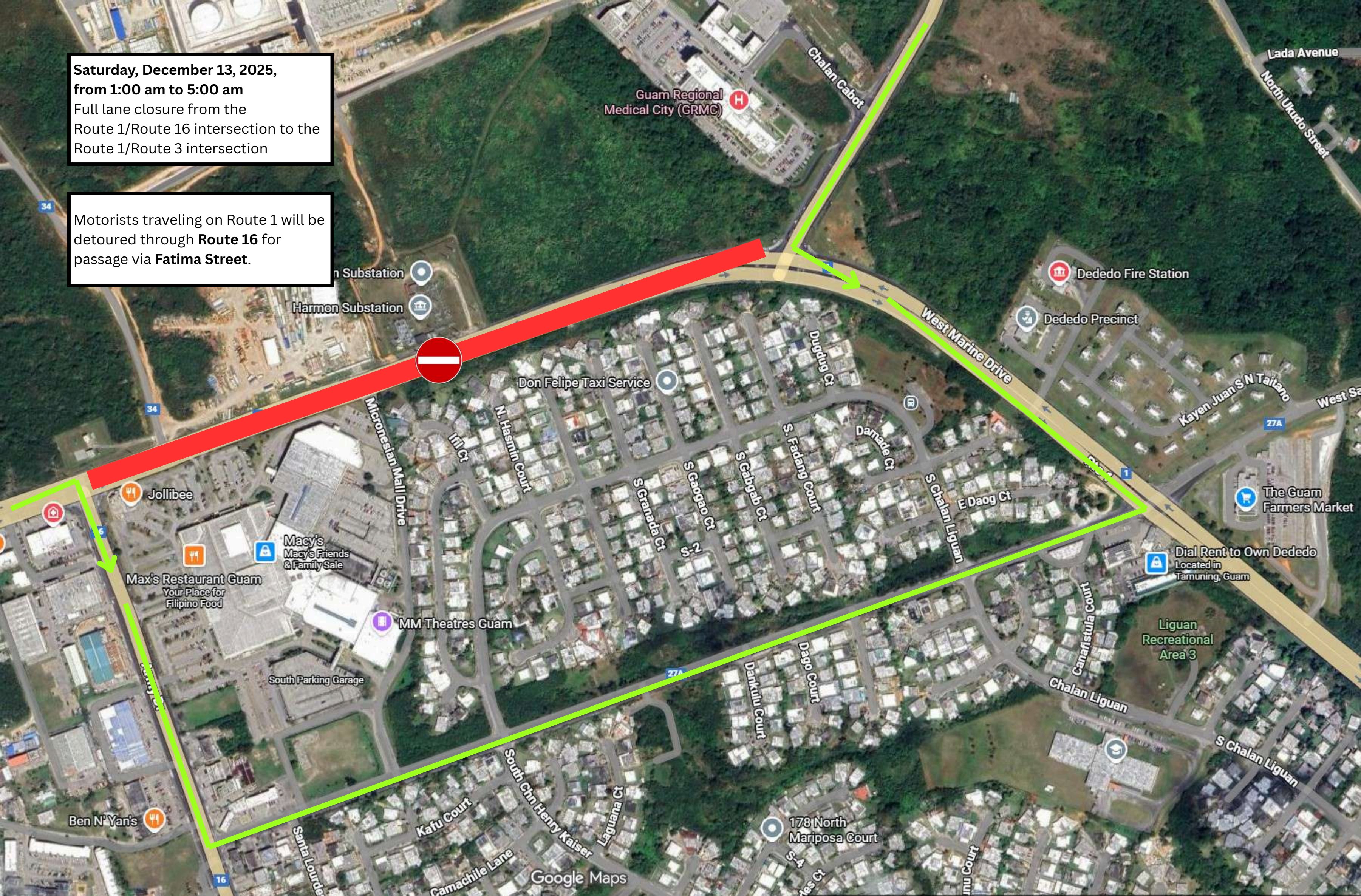
###

Facebook: <https://www.facebook.com/GuamPowerAuthority>

Instagram: <https://instagram.com/guampowerauthority>

Saturday, December 13, 2025,
from 1:00 am to 5:00 am
Full lane closure from the
Route 1/Route 16 intersection to the
Route 1/Route 3 intersection

Motorists traveling on Route 1 will be
detoured through **Route 16** for
passage via **Fatima Street**.





Saturday, December 13, 2025,
from 5:00 am to 4:00 pm
Partial road closure along Route 1,
near GPA Harmon Substation (across
Micronesia Mall)

Two outermost southbound lanes
and the outermost northbound lane
will remain closed until 4:00 p.m., or
sooner if work is completed earlier
than scheduled.

The innermost southbound lane and
two innermost northbound lanes will
reopen to allow traffic to flow
through the area

Guam Regional
Medical City (GRMC) 

Harmon Substation 
Harmon Substation 

Southbound lane closure of
the two outermost lanes

Northbound lane closure of
the outermost lane

Don Felipe Taxi Service 

 Jollibee

 Max's Restaurant Guam
Your Place for

 Macy's
Macy's Friends
& Family Sale

Micronesia Mall Drive

1111 Ct

Jasmin Court

S Granada Ct

S Gaogao Ct

S Gabgab Ct

S. Fabang Court

Dungdung Ct

Chalan Cabot

34

34

1

1

16