

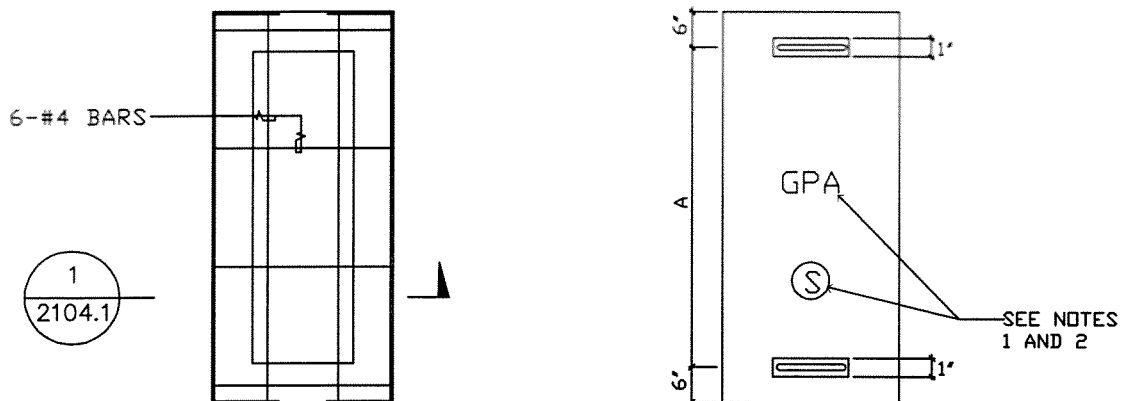


GUAM POWER AUTHORITY
P.O. BOX 2977 HAGATNA, GUAM 96932-2977
PREPARED BY ENGINEERING DEPARTMENT

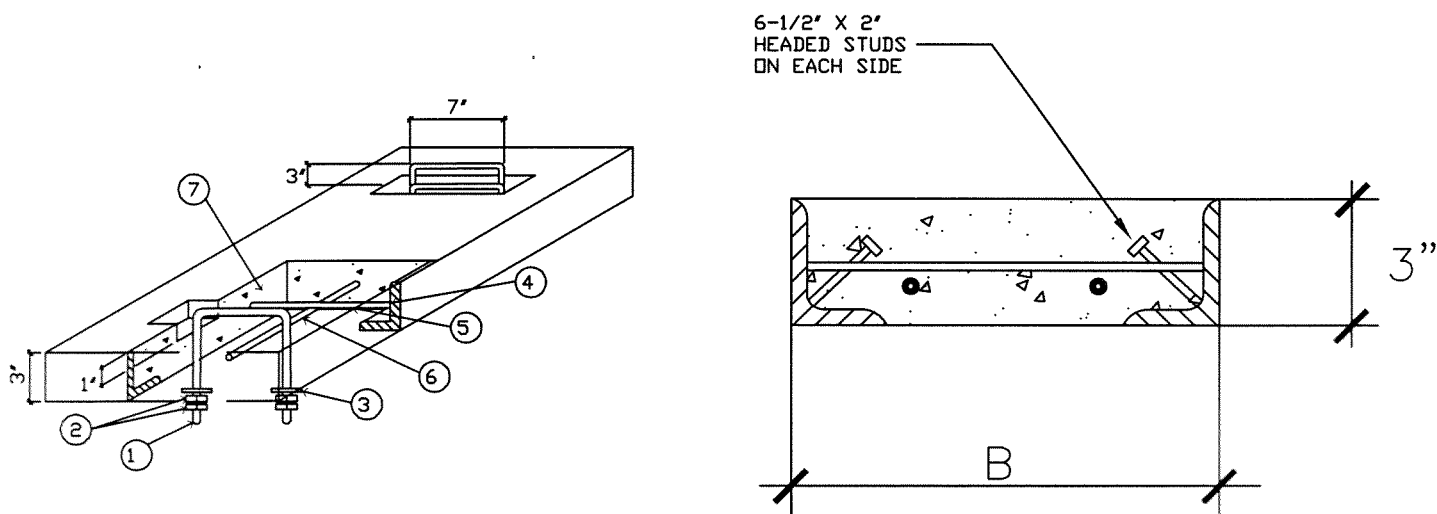
CONCRETE HANDOLE
COVER DETAIL

REF. 2104.1

REV. 1



PLAN



1 ANGLE IRON
2104.1 NOT TO SCALE

A HANDHOLE COVER
2104.1 SCALE: NONE

EFFECTIVE DATE: 9/19/11

ISSUED: *[Signature]*

APPROVED: *[Signature]*



GUAM POWER AUTHORITY

P.O. BOX 2977 HAGATNA, GUAM 96932-2977

PREPARED BY ENGINEERING DEPARTMENT

CONCRETE HANDHOLE
COVER DETAIL

REF. 2104.2

REV. 1

NOTES:

1. ALL LETTERING SHALL BE 3" WITH A $\frac{1}{4}$ " EMBEDMENT.
2. INDICATE GPA ON EVERY HANDHOLE COVER WITH THE LETTER "P" FOR PRIMARY OR "S" FOR SECONDARY AND CENTERED AS SHOWN.
3. $A=3'-5\frac{3}{4}"$, $B=1'-4\frac{3}{8}"$ FOR 5'x4'x5' PRIMARY HANDHOLE.
4. $A=1'-5\frac{3}{4}"$, $B=1'-1\frac{3}{8}"$ FOR 2'x4'x3' SECONDARY HANDHOLE.
5. $A=1'-5\frac{3}{4}"$, $B=1'-2\frac{3}{4}"$ FOR 2'x2'x3' SECONDARY HANDHOLE.

ITEM	BILL OF MATERIALS
①	1/2" ϕ STEEL LIFTING DEVICE GALVANIZED
②	NUT, 1/2" ϕ HOLE
③	ROUND WASHER 2" ϕ WITH 5/8" ϕ HOLE
④	3" X 3" X 3/8" ϕ ANGLE IRON, HOT DIP GALVANIZED ALL AROUND
⑤	#4 BARS WELDED TO ANGLES
⑥	16-1/2" ϕ X 2" HEADED STUDS WELDED TO ANGLES.
⑦	3" THICK CONCRETE AT 3000 PSI. YIELD STRENGTH = GRADE 40

EFFECTIVE DATE: 9/19/05

ISSUED: *[Signature]*

APPROVED: *[Signature]*