

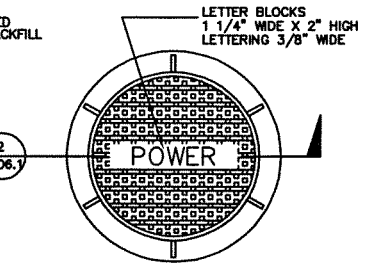
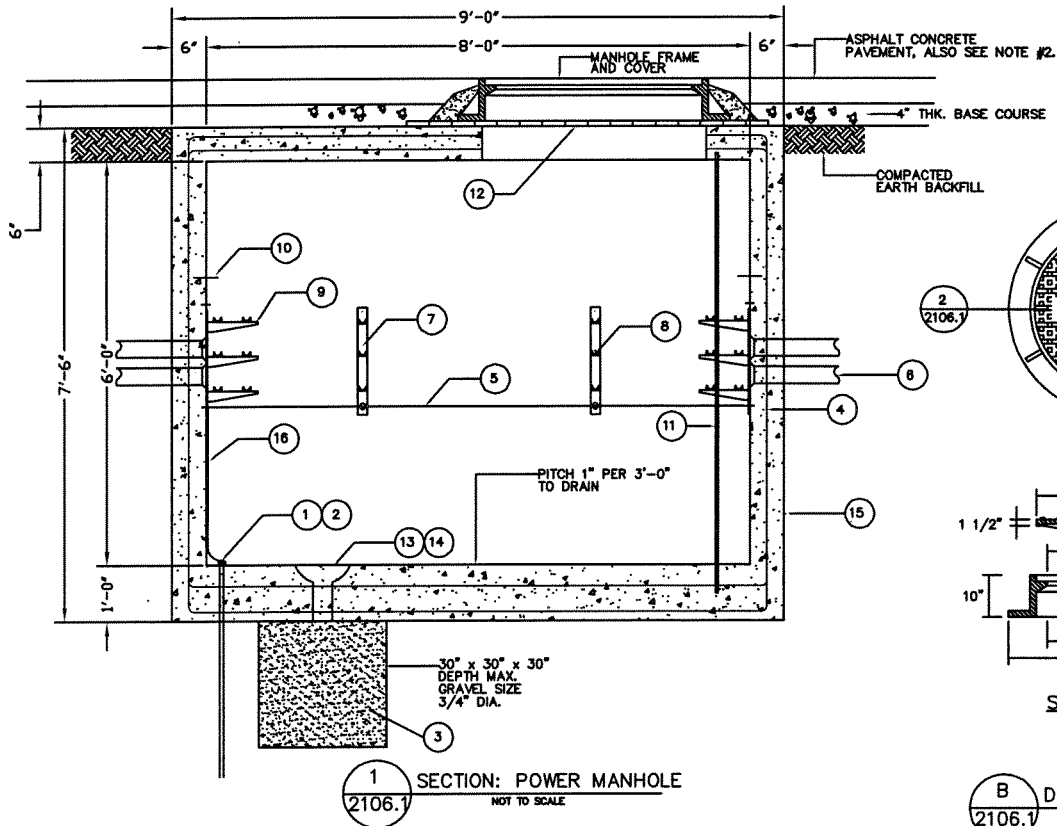


GUAM POWER AUTHORITY
P.O. BOX 2977 HAGATNA, GUAM 96932-2977
PREPARED BY ENGINEERING DEPARTMENT

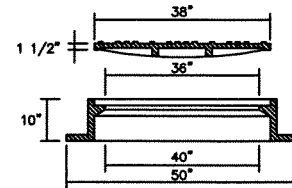
8' x 8' x 6' CONCRETE
PRIMARY MANHOLE

REF. 2106.1

REV. 2

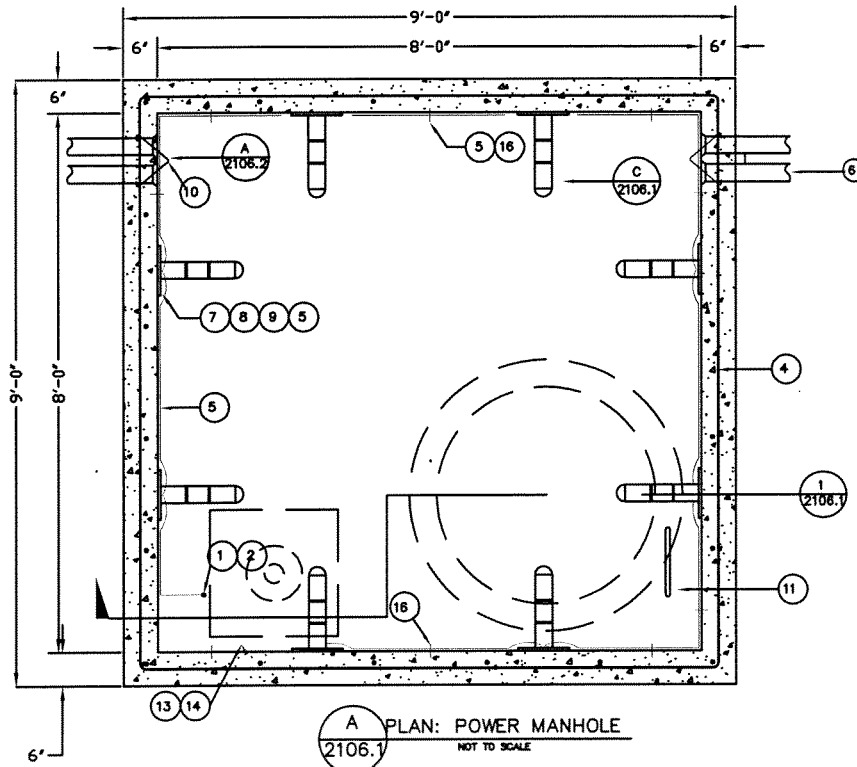


PLAN

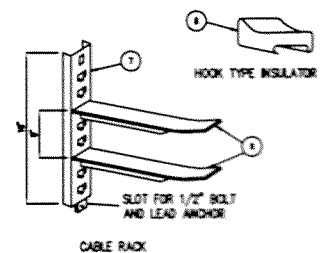


SECTION 2
2106.1

B
2106.1
DETAIL: MANHOLE COVER
NOT TO SCALE



A
2106.1
PLAN: POWER MANHOLE
NOT TO SCALE



C
2106.1
CABLE RACK DETAIL
NOT TO SCALE

EFFECTIVE DATE: 7/19/15

ISSUED: *[Signature]*

APPROVED: *[Signature]*



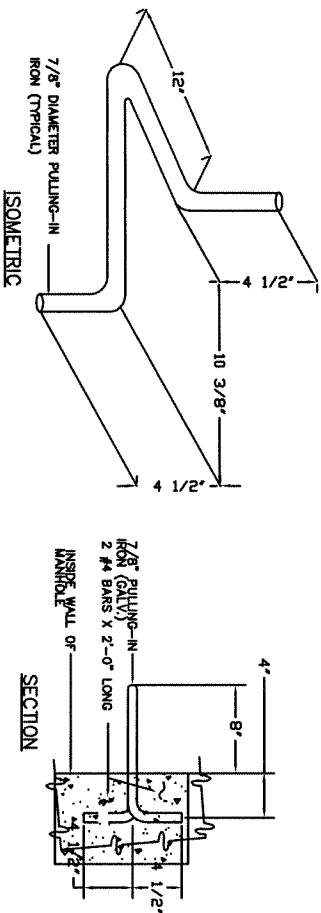
GUAM POWER AUTHORITY
P.O. BOX 2977 HAGATNA, GUAM 96932-2977

PREPARED BY ENGINEERING DEPARTMENT

8' x 8' x 6" CONCRETE
PRIMARY MANHOLE

REF. 2106.2

REV. 2



A PULLING-IN-IRON DETAIL
2106.2
NOT TO SCALE

ITEM	BILL OF MATERIALS (THIS SHEET ONLY)
1	5/8" X 8'-0" COPPER GROUND ROD
2	5/8" COPPER GROUND ROD CLAMP
3	3/4" MAXIMUM GRAVEL SIZE, FILL TO FINISHED FLOOR
4	#4 REBAR (GRADE 40) AT 6" O.C. BOTH WAYS TOP, SIDES AND BOTTOM.
5	#4 COPPER WIRE (SOLID) FOR GROUNDING HARDWARES.
6	CONDUIT WITH END BELL, 6" DIAMETER OR AS REQUIRED.
7	CABLE RACK HOT DIP GALVANIZED.
8	HOOK TYPE INSULATOR
9	INSULATOR METAL SUPPORT
10	PULLING-IN-IRON 7/8", GALV. (MOUNTED OPPOSITE TO CONDUIT ENTRANCE.)
11	5/8" STEEL GALV. LADDER, 6'-6" LENGTH.
12	BRICK COLLAR LINED UP WITH CEMENT MORTAR
13	7 1/2" DRAIN (CAST IRON)
14	7 1/2" PERFORATED COVER (CAST IRON)
15	6" THICK CONCRETE WALL, FLOOR AND ROOF SLAB 3,000 PSI.
16	WIRE, STAPLE

NOTES:

- COORDINATE LAYOUT AND EXACT DIMENSIONS WITH GPA ENGINEERING PRIOR TO INSTALLATION.
- AREA OF CONDUIT ENTRANCES SHOULD BE 3'-4" MINIMUM FROM FLOOR SLAB, 12" MINIMUM FROM LEFT OR RIGHT SIDE WALL AND 2'-0" MINIMUM FROM TOP OF MANHOLE.
- THE MANHOLE COVER SHALL BE FLUSHED WITH THE ROADWAYS OR SIDEWALK SURFACE, OTHERWISE THE COVER SHOULD BE ELEVATED 2" FROM REGULAR GROUND SURFACE.
- GROUND ALL HARDWARE IN THE MANHOLE WITH #4 BARE COPPER WIRE.
- USE A HEAVY DUTY NON-RATTING MANHOLE COVER AND FRAME. CONSTRUCTED OF CORROSION RESISTANT GRAY IRON, AND BUILT TO WITHSTAND WEAR AND SHOCK. WEDGE ADJUSTMENT SHALL ELIMINATE NOISE AND LID DISPLACEMENT. COVER SHALL NOT RATTLE OR BECOME LOOSE, AND SHALL REMAIN SECURELY IN FRAME WITHOUT THE USE OF ASPHALT OR OTHER FILLING. USE A CAST CLEAT TYPE SURFACE MANHOLE COVER.
- COVER SHALL BE LOCATED 1'-0" FROM CORNER OF THE WALL AND AWAY FROM CONDUIT ENTRANCES ON THE SAME WALL. STEEL GALVANIZED LADDER SHALL BE CONSTRUCTED TO OBTAIN MAXIMUM STRENGTH AND LONG LIFE UNDER SEVERE CORROSIVE CONDITIONS INSIDE THE MANHOLE. USE 8" ROUND RUNGS EXTENDED THROUGH THE RAILS AND WELD BOTH INSIDE AND OUT. SIDE RAIL SHALL BE 1 7/8" X 1 3/8" X 1/8" CHANNEL. USE 6-RUNGS AT 12" ON CENTER. LADDER SHALL BE FULLY REMOVABLE WITH THE USE OF AN ADJUSTABLE WRENCH.

EFFECTIVE DATE: 7/19/05

ISSUED: *[Signature]*

APPROVED: *[Signature]*